

Lighting solutions

For Behavioral Health Spaces



Illuminating Safety with Style for Every Space

PACO
a brand of **LMP**

CONTENTS

ABOUT US	3
LIGHTING SOLUTIONS FOR ALL RISK LEVELS	4
ZONES AND SECURITY LEVELS	5
FINDING THE RIGHT COLOR FINISH	6
VR4A - NEW PRODUCT	9
MTLA - NEW PRODUCT	11
MNLA - NEW PRODUCT	13
MDA4 / MDA6	15
MATERIAL VS SECURITY LEVELS	16
THE MRGA SERIES	18
MRGA1 / MRGA2	21
MRGA3	22
MRGAL	23
MRPA1	25
MRPA2	26
MRPA3	27
MRPA4	28
MRPA5	29
MURA	31
PUWA	33

Firstly,

About Us

Established in 1978 and privately owned, Pa-Co has a longstanding history of manufacturing custom and institutional specification grade luminaires for hospitals, behavioral facilities, specialized medical clinics and nursing homes.

Our state-of-the-art manufacturing equipment paired with local testing laboratories allow us to design, produce and deliver top quality products with all the options needed to fulfill most healthcare applications.

Pa-Co has evolved throughout the years and will continue to do so as we strive to offer our valued customers and their patients the latest technologies, options, and designs. In designing our healthcare luminaires we've emphasized quality and functionality as our foremost priorities, while integrating design aesthetics to create the perfect atmosphere and experience for patients and medical personnel.

We are your local solution for your health care applications.

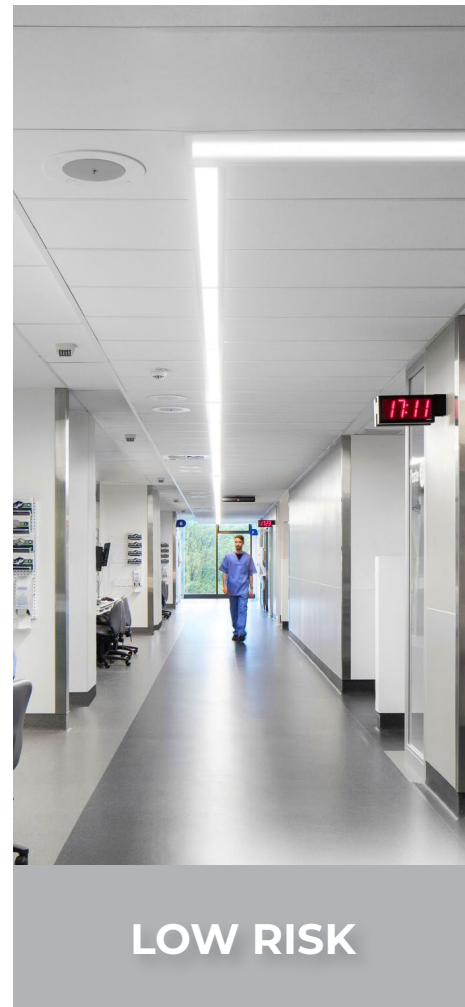
The Pa-Co Team



Lighting Solutions for All Risk Levels

All our health care luminaires for general lighting and patient rooms are offered in both standard and tamper proof/anti-vandal versions. Heavier gauge steel and thicker polycarbonate security lens are the two main modifications that make our fixtures suitable for behavioral and psychiatric facilities.

The higher the security level needed the thicker the steel gauge and security lens will be.



LOW RISK

Staff only areas. No patient use.



MEDIUM RISK

Patient access is controlled, or use is supervised with no solitary and/or unsupervised use.



HIGH RISK

Areas with solitary and/or unsupervised patient use.

Zones and Security levels

COMPARATIVE CATEGORIES	ZONE 1	ZONE 2	ZONE 3
Security Level	Lowest	Moderate	Highest
Security and Compliance Requirements	Closed and locked No access to patients	Patients attended by staff	Patient alone more than 15 min
Rooms / Spaces			
Nurses/Doctors Workrooms	✓		
Team Rooms	✓		
Medicine Rooms	✓		
Staff offices / lounges	✓		
Spaces outside the unit as instructed	✓		
Open nurse station (work area)	✓		
Interview rooms		✓	
Patient Support Rooms		✓	
Corridors		✓	
Living rooms		✓	
MRGA1		✓	
MRGA2		✓	
MRGA3		✓	
MRGAL		✓	
Patient Lounge		✓	
Recreational Therapy Room		✓	
Occupational Therapy Room			
Conference/Hearing Room			
Reception room			
Common area with direct line of sight			
Common areas			✓
Sally Ports			✓
Isolation room (staff observation)			✓
Patient bedrooms			✓
Patient toilets/shower rooms			✓
Quiet room			✓
Corridors without a direct line of sight			✓
Common area without a direct line of sight			✓

* BEHAVIORAL HEALTH DESIGN GUIDE DESIGN GUIDE | BHFC DESIGN CONSULTING (BHFCLLC.COM)

** PATIENT SAFETY STANDARDS, MATERIAL AND SYSTEMS GUIDELINES OMH PATIENT SAFETY STANDARDS 27TH EDITION (NY.GOV)

FINDING THE RIGHT FINISH: COLOR CHOICES FOR SAFE & SOOTHING SPACES

Color plays a crucial role in creating a more humanized behavioral healthcare environment. That's why we offer new color finish options designed to enhance and bring warmth to patient rooms, recreational spaces, corridors, and common areas. Whether the goal is to foster a calming and reassuring atmosphere or introduce inclusive stimulation, our thoughtfully curated colors help achieve the desired ambiance.

The psychology of color has long played a crucial role in shaping built environments to evoke specific emotions and influence behavior. Nowhere is this more impactful than in healthcare design. Ever noticed how hospitals often feature soft, cool color palettes? This choice is far from random. The hue, saturation, and brightness of colors work together to create an atmosphere that affects how people feel within a space. In hospitals and behavioral health facilities, these colors are intentionally selected to promote calmness, relaxation, and a sense of healing for patients on their journey to recovery.

New Color Finish Options



VR4A



MTLA

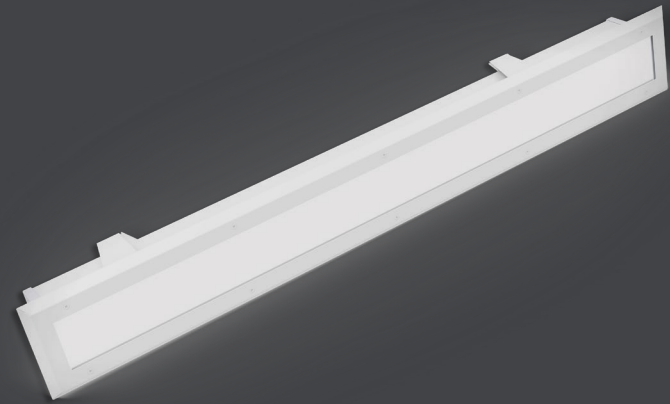


MNLA



MDA

New - VR4A



Recessed Flange, Linear System

The VR4A Recessed is a linear system of LED luminaires that can be integrated into most ceiling types to provide a discreet, flexible general lighting solution for behavioral health environments.

These luminaires deliver up to 1000 Lumens Per Foot. Available in 2F, 4F, 6F or 8F, and continuous runs.



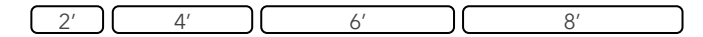
VR4A

IP65- RECESSED LINEAR LUMINAIRE
NEW PRODUCT

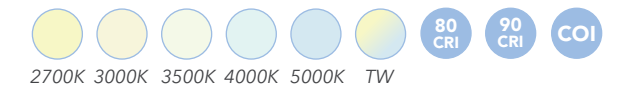


DIMENSIONS

4" Wide x



LED OPTIONS



DOWNLOAD SPEC SHEET & IES FILES:
* PRODUCT AVAILABLE IN JULY 2025

VR4A

STANDARDS



LUMEN OUTPUT

Lumens Per Foot

- 300
- 500
- 750
- 1000

* Custom lumen package available



White Opal

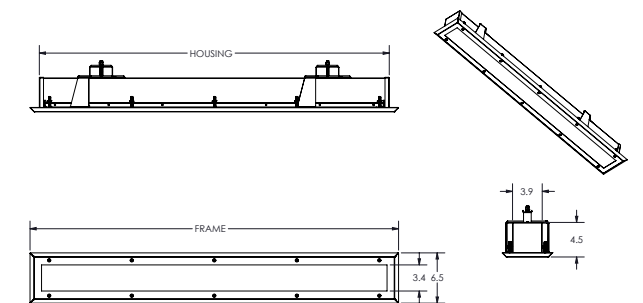
FINISHES



MOUNTING

Recessed Flange and T-Bar / Grid

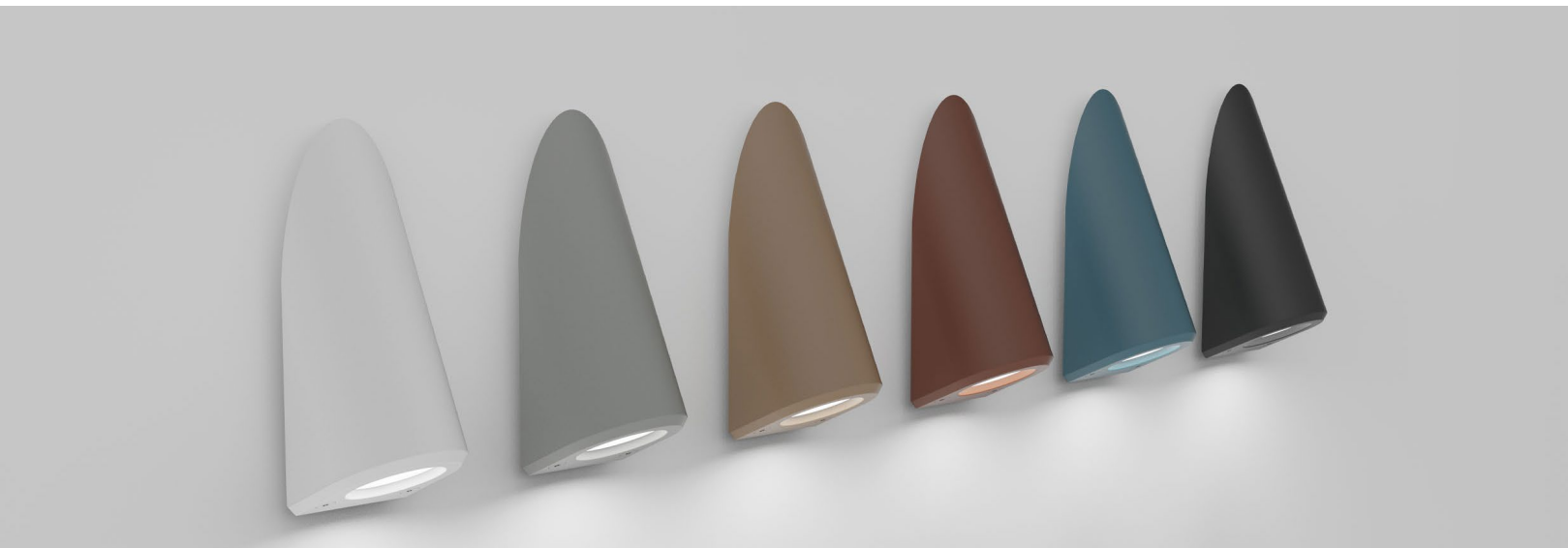
FIXTURE DIMENSIONS



Task Light.

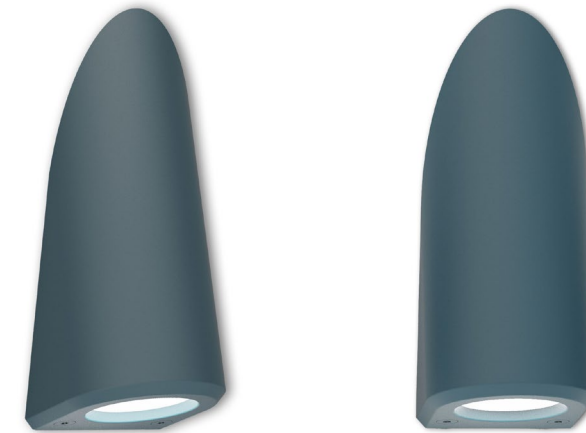
The **MTLA Task Light** combines a robust cast aluminum construction with a powder-coated finish. Its thoughtfully sloped design minimizes ligature risks, while security fasteners provide added tamper resistance.

Users can easily adjust brightness levels with a tactile, touch-sensitive dimming feature, offering a customizable lighting experience.



MTLA

BEHAVIORAL TASK LIGHT
NEW PRODUCT



DOWNLOAD SPEC SHEET & IES FILES:

[MTLA](#)

STANDARDS



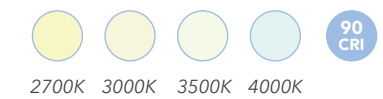
FEATURES

Wattage:	3 Watts
Lumens:	100 Lm 200 Lm 300 Lm
LED CRI:	≥90Ra
Voltage:	120-277V
Optic Distribution:	Narrow Beam Wide Beam
IP Grade:	IP65
Warranty:	50,000 Hours 5 Years

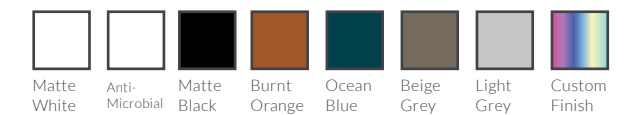
APPLICATIONS

- Patient rooms
- Behavioral health patient rooms
- Nursing homes

LED OPTIONS



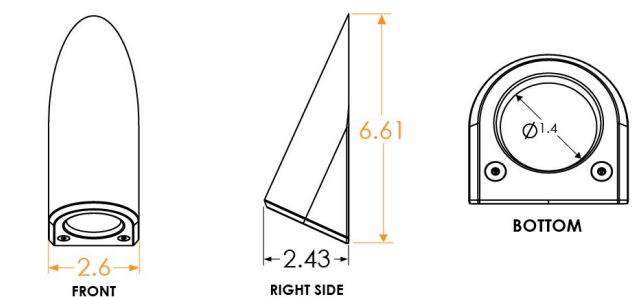
FINISHES



MOUNTING

Wall mount

FIXTURE DIMENSIONS



Steplight.

The MNLA Steplight is the ultimate solution for behavioral facilities requiring robust housings and tamper-resistant fasteners to prevent contraband storage.

This fixture is designed to seamlessly integrate into hallways, restrooms, behavioral health facilities, corridors, and any space demanding high performance and Vandal-resistant.



MNLA

STEPLIGHT FOR BEHAVIORAL FACILITIES

NEW PRODUCT



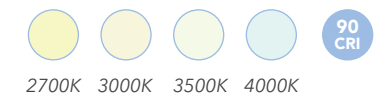
DOWNLOAD SPEC SHEET & IES FILES:

[MNLA](#)

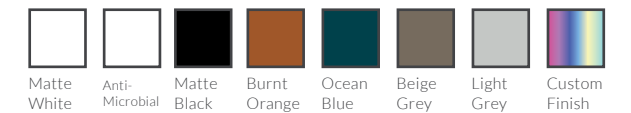
APPLICATIONS

- Behavioral Healthcare Facilities
- Retirement homes
- Chronic care facilities

LED OPTIONS



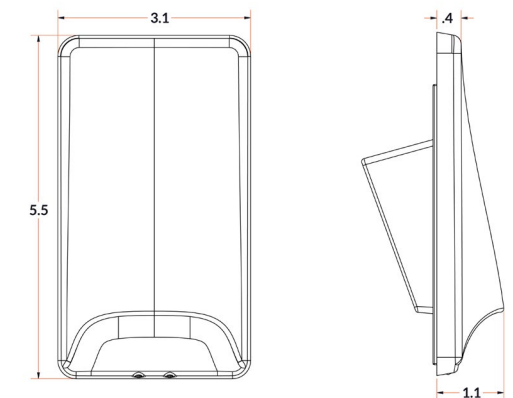
FINISHES



MOUNTING

Wall mount

FIXTURE DIMENSIONS



STANDARDS



LUMEN OUTPUT

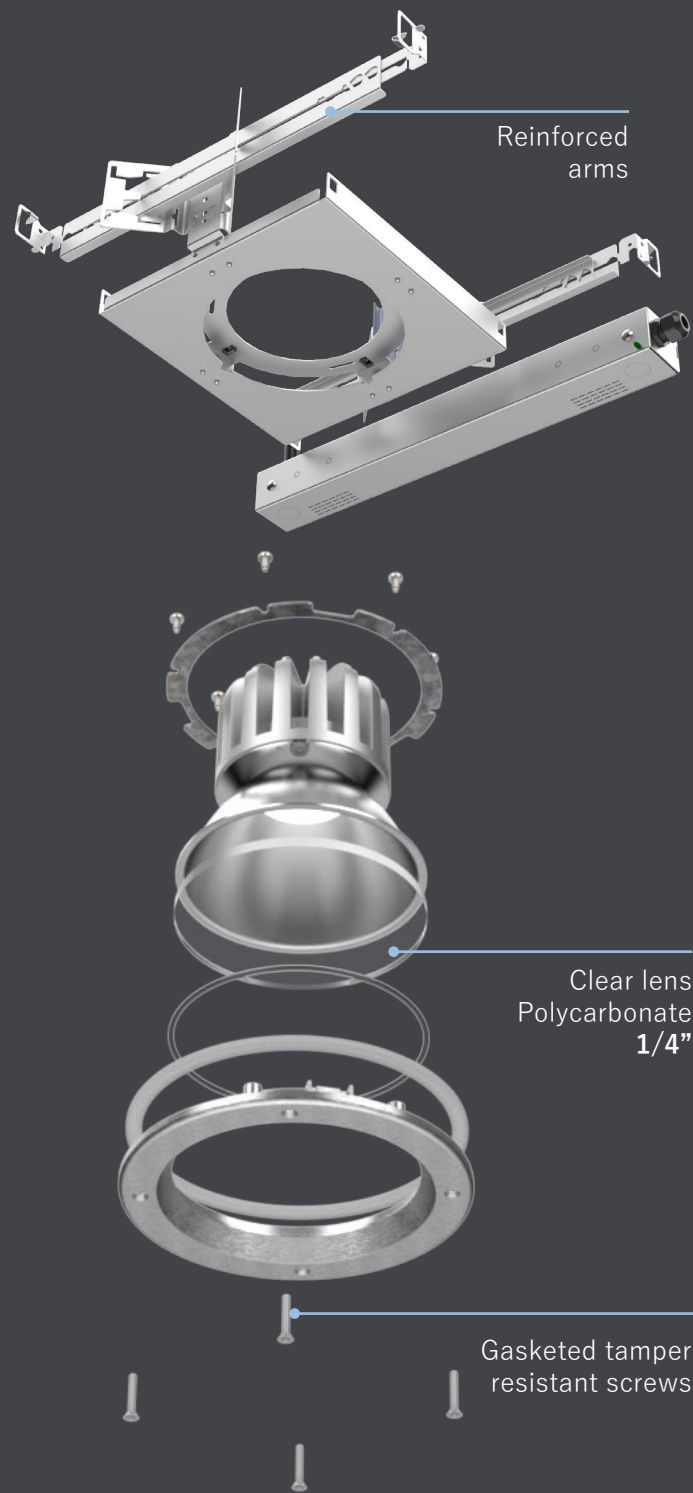
Lumens*	Led options	Wattage
20	White	0.80
50	White	1.50
100	White	2.50
20	Amber	0.81
50	Amber	1.52
100	Amber	2.56

* Custom lumen package available

MEDOLIA

SEALED DOWNLIGHTS

The Medolia family offers a complete solution of institutional downlights designed to meet the most stringent performance, safety, appearance, and flexibility needed for specialty applications.



MDA4 / MDA6

IMPACT RESISTANT DOWNLIGHT



DOWNLOAD SPEC SHEET & IES FILES: [MDA4](#)

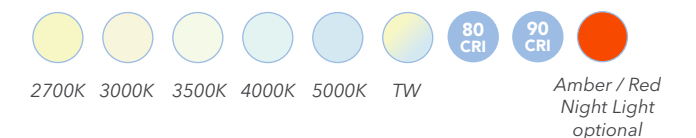


DOWNLOAD SPEC SHEET & IES FILES: [MDA6](#)

DIMENSIONS



LED OPTIONS



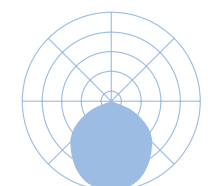
MOUNTING

Recessed

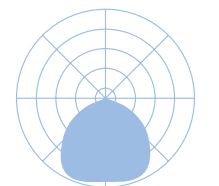
LUMEN OUTPUT

Lumens*	Led options
500	White
1000	White
2000	White
3000	White
1500 / 200	White / Red
1500 / 300	White / Amber
200	Red
300	Amber

* Custom lumen package available

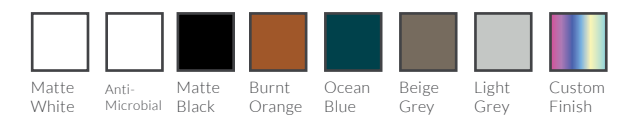


White Opal



Perforated basket

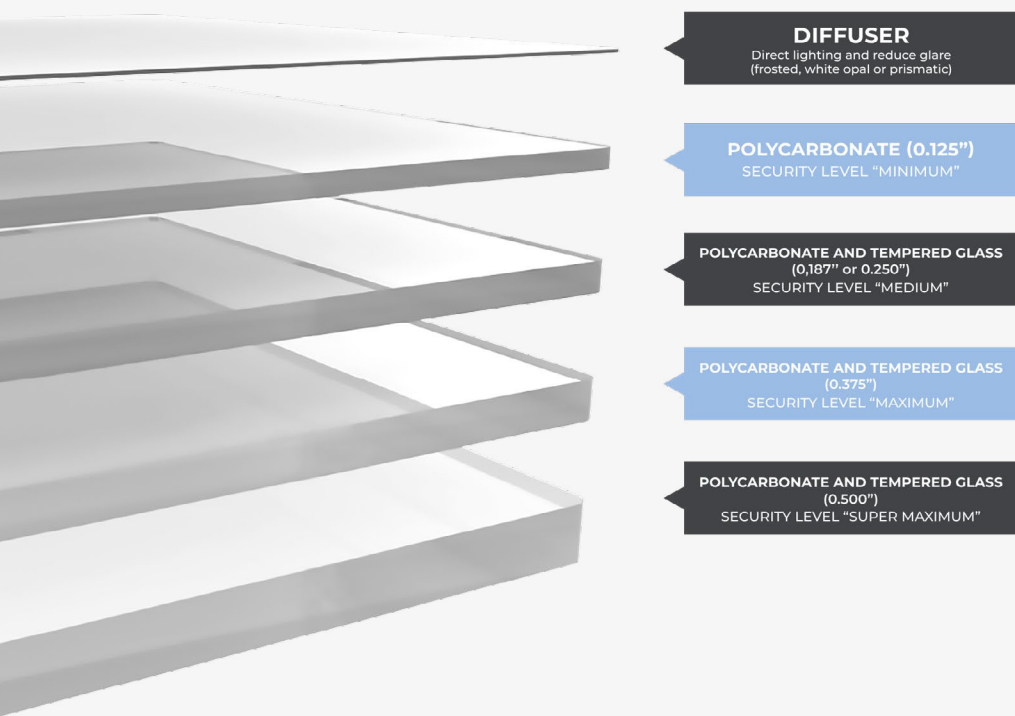
TRIM FINISH OPTIONS



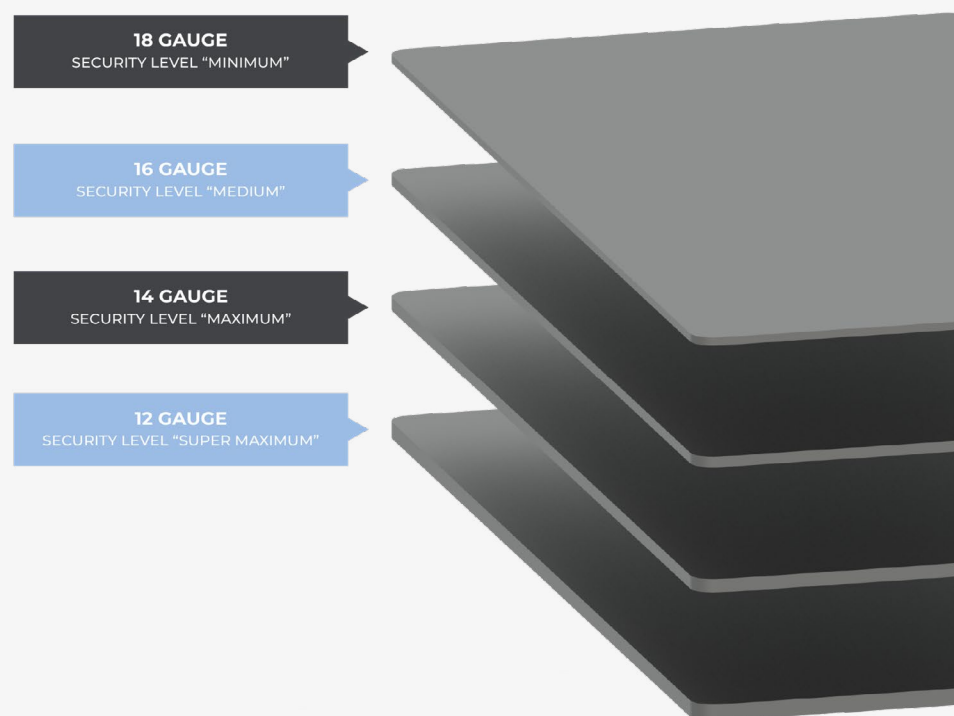
STANDARDS



LENS TYPE



STEEL GAUGE



IK 10 IMPACT RESISTANT



LIGATURE RESISTANT



CONTROLLED ENVIRONMENTS



IP65 / IP66

MATERIAL VS SECURITY LEVELS

TAMPER-RESISTANT FASTENERS

Our fixtures are secured with tamper-resistant fasteners featuring specialized heads, designed to deter unauthorized access and prevent damage.

These fasteners require a dedicated tool for removal, ensuring enhanced security and reliability.

IMPACT-RESISTANT LENS

For high-abuse environments, luminaires are fitted with impact-resistant polycarbonate lenses.

These lenses safeguard internal components while maintaining optimal light transmission.

MOUNTING TYPE

Designed for surface and wall-mounted applications to minimize the risk of self-harm in patients.

Compatible with drywall ceilings, offering options for integrally flanged fixtures or drywall kits to ensure seamless installation.

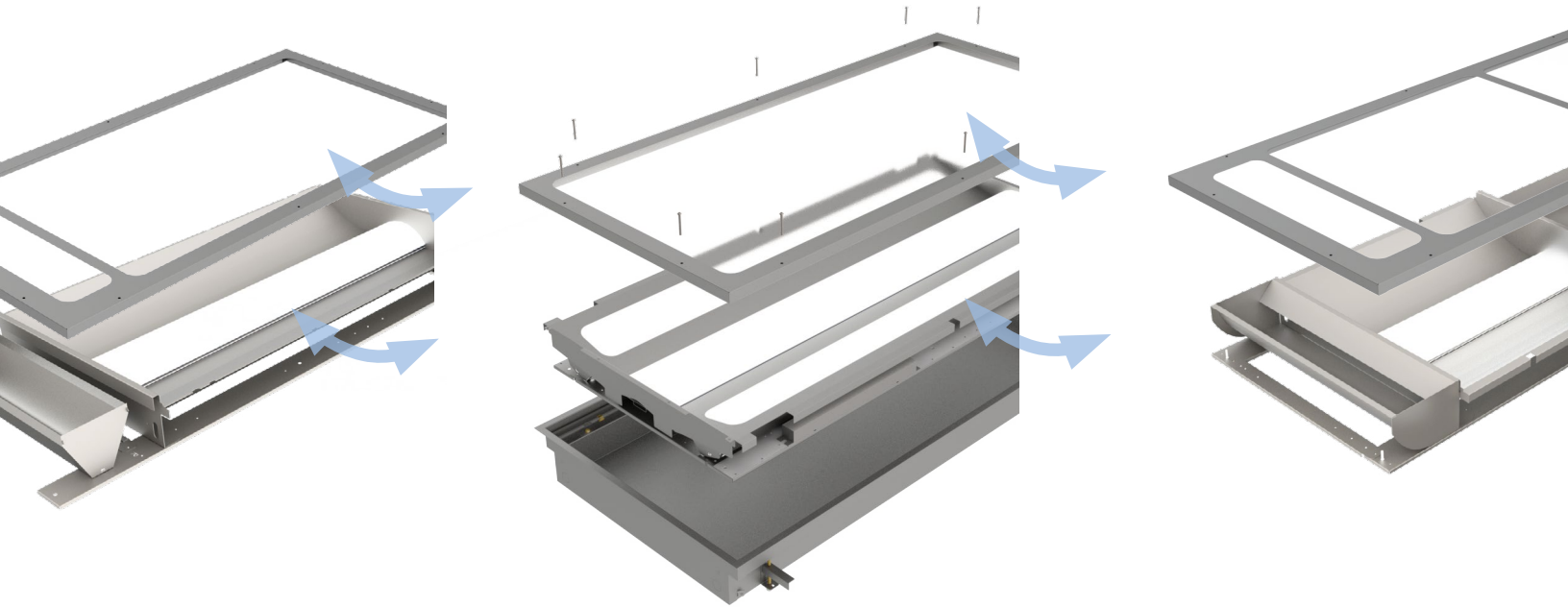
COMPLIANCE WITH HEALTHCARE STANDARDS

Our luminaires are designed to meet the highest safety and hygiene standards, ensuring full compliance with industry regulations while prioritizing patient well-being and protection.

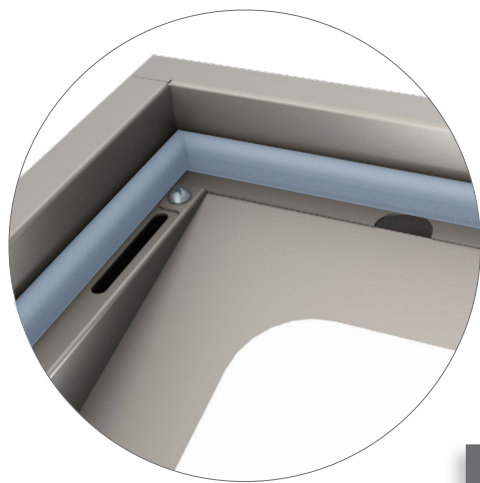


The MRGA Series

The MRGA Series is thoughtfully engineered with a standardized housing that seamlessly adapts to both T-bar and plaster installations. Its innovative gasketed door system ensures consistent, high-quality production, assembly, and performance. What sets the MRGA Series apart is its modular interior design, allowing for a variety of lens and lighting configurations tailored to the specific needs of patient rooms and other behavioral health environments.



Modular system, gasketed design...IP65!

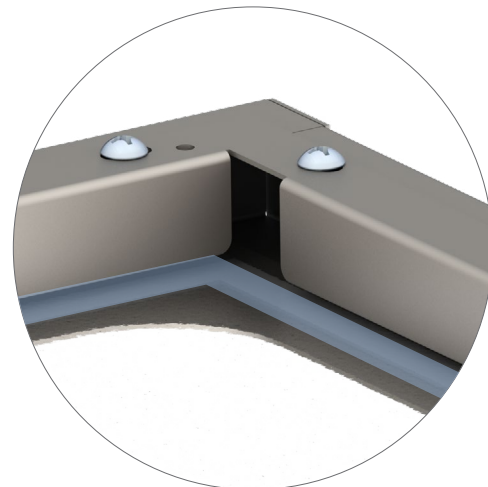


Housing Gasket

"D-Shape" Gasket
High quality D-Shape gasket provides a perfect seal between the door and the housing. The hollow shape assures a long lasting dust and water tight seal after multiple door openings.

Door Lens gasket

.125" Thick "EPDM"
The lenses for all MR Series are gasketed between the door and its frame. Stainless steel fasteners all around the frame guarantees a tight fit between the lens and gasket.



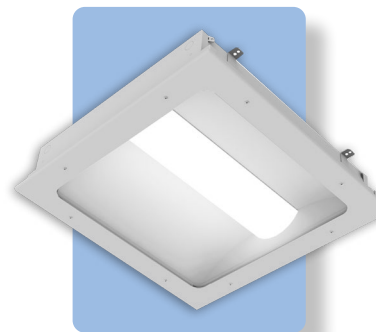
General Lighting



Our **MRGA and MDA Series** offers a complete range of luminaires specifically designed for general lighting in behavioral health facilities. These sealed, washable fixtures feature convenient front door access for easy maintenance, combining a sleek, modern aesthetic with the technical specifications required for behavioral health installations.

Notably, this product line is **ligature-resistant** and constructed with enhanced durability, ensuring safety and longevity without compromising on design.

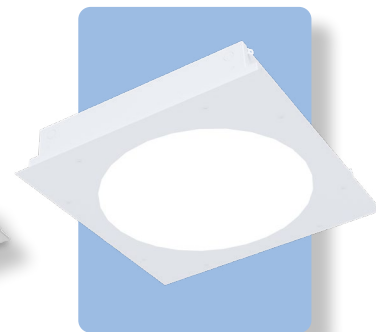
MRGA1



MRGA2



MRGA3



MRGAL



General Lighting Recommendations

General	Illumination Standards (fc)
Corridors (day)	10 to 20
Corridors (night)	5
Offices (general)	30
Offices (examination)	75 to 100
Sorting room	40
Waiting areas	30

*(ANSI-IES RP-29-22)





MRGA1 / MRGA2

RECESSED LED LUMINAIRE 1X4, 2X2, & 2X4

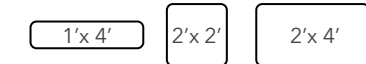


DOWNLOAD SPEC SHEET & IES FILES: [MRGA1](#)

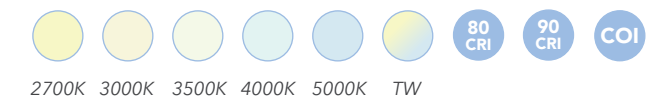


DOWNLOAD SPEC SHEET & IES FILES: [MRGA2](#)

DIMENSIONS



LED OPTIONS

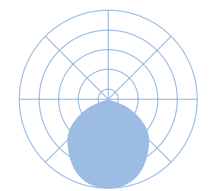


MOUNTING

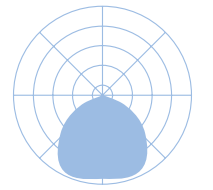
T-Bar / Plaster

LUMEN OUTPUT

Dimensions	Lumens*
1'x4'	3000
	4000
	6000
2'x2'	3000
	4000
	6000
2'x4'	4000
	6000
	8000
	10,000



White Opal



Perforated basket

* Custom lumen package available

SECURITY LENS OPTIONS

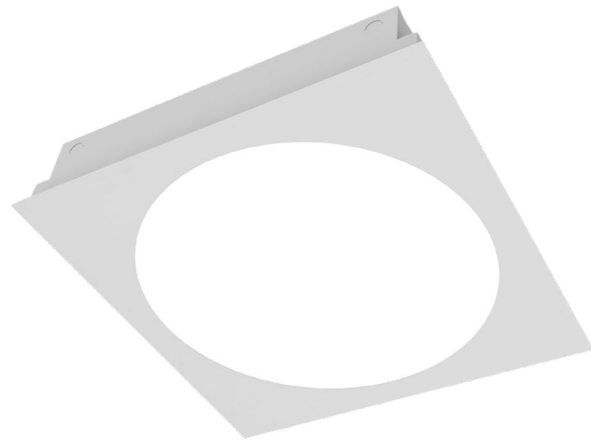
- M1 | Clear Polycarbonate (1/8")
- M3 | Clear Polycarbonate (3/16")
- M4 | Clear Polycarbonate (1/4")
- M5 | Clear Polycarbonate (3/8")
- M6 | Clear Polycarbonate (1/2")

STANDARDS



MRGA3

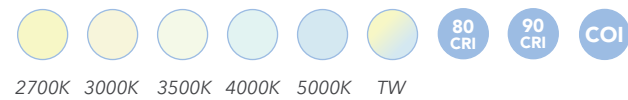
RECESSED GENERAL AMBIENT LUMINAIRE 2X2



DIMENSIONS

2'x 2'

LED OPTIONS

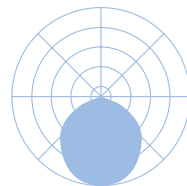


MOUNTING

Recessed

LUMEN OUTPUT

Dimensions	Lumens*
2'x2'	3000
	4000
	6000



White Opal

* Custom lumen package available

LENS OPTIONS

- **H1** | White Opal Acrylic
- **FA1** | Prismatic Acrylic
- **L5** | White Frosted Polycarbonate

STANDARDS



DOWNLOAD SPEC SHEET & IES FILES: [MRGA3](#)



MRGAL

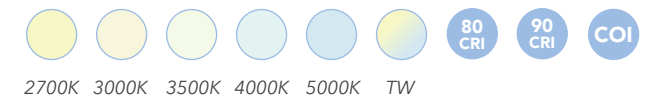
SPECIFICATION-GRADE LINEAR LUMINAIRE



DIMENSIONS

2' 4' 6' 8'

LED OPTIONS



MOUNTING

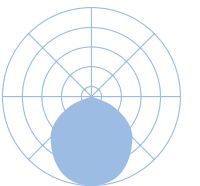
Recessed

DOWNLOAD SPEC SHEET & IES FILES: [MRGAL](#)



LUMEN OUTPUT

Lumens Per Foot
500 Lumens Per Ft
750 Lumens Per Ft
1000 Lumens Per Ft
1500 Lumens Per Ft



White Opal

* Custom lumen package available

SECURITY LENS OPTIONS

- **M1** | Clear Polycarbonate (1/8")
- **M3** | Clear Polycarbonate (3/16")
- **M4** | Clear Polycarbonate (1/4")
- **M5** | Clear Polycarbonate (3/8")
- **M6** | Clear Polycarbonate (1/2")

STANDARDS




Multifunction / Patient Room




Pa-Co's MRPA series is a complete line of multifunction recessed luminaires created specifically for patient rooms. Featuring multiple compartments for ambient, exam and/or reading illumination (depending on the model), the MRPA series luminaires are conceived for functionality and enhanced patient experience. All MRP models are sealed washable fixtures with front door access for easy maintenance and a clean modern design. In addition, the MRPA series can be built for compatibility with wide range of sophisticated control systems as well as patient-controlled nurse call system (low voltage relay ready) or wall switches.

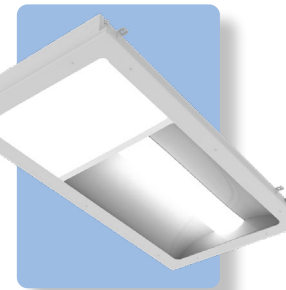
MRPA1




MRPA2



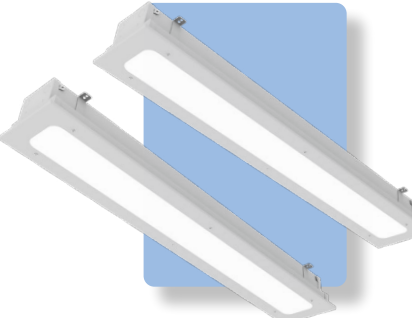
MRPA3



MRPA4



MRP5 / MRPA5



Patient Rooms Lighting Recommendations

Patient Room	Illumination standards (fc)
Ambient	10 to 20
Reading	30 to 40
Exam	75 to 100
Night Light	2
Bathroom	15

*(ANSI-IES RP-29-22)

MRPA1

PATIENT ROOM RECESSED LED LUMINAIRE



DOWNLOAD SPEC SHEET & IES FILES:

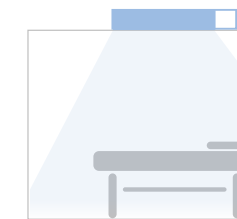


DIMENSIONS

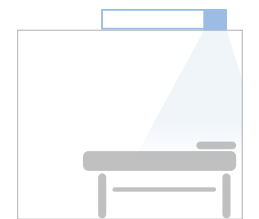
2'x 4'

FUNCTIONS:

- Ambient
- Reading



Ambient



Reading

*Based on book held at 45°

STANDARDS



LED OPTIONS



MOUNTING

T-Bar / Plaster

LUMEN OUTPUT

Function	Lumens*	Avg. Illuminance**
Ambient	3000	16 fc
	4000	21 fc
Reading	1500	18 fc
	2500	31 fc

* Custom lumen package available

**For illustrative purposes only based on a 10' x 10' x 9' room and subject to a number of assumptions based on the specific configuration of the room.



MRPA2

RECESSED LUMINAIRE (EXAM, AMBIENT, READING)



DOWNLOAD SPEC SHEET & IES FILES:

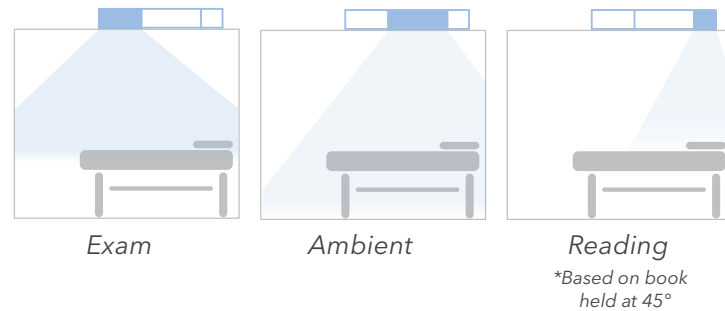
MRPA2

DIMENSIONS

2'x 4'

FUNCTIONS:

- Exam
- Ambient
- Reading



STANDARDS



LED OPTIONS



MOUNTING

T-Bar / Plaster

LUMEN OUTPUT

Function	Lumens*	Avg. Illuminance**
Exam	8000	91 fc
	9000	103 fc
Ambient	3000	16 fc
	4000	21 fc
Reading	1500	18 fc
	2500	31 fc

* Custom lumen package available

**For illustrative purposes only based on a 10' x 10' x 9' room and subject to a number of assumptions based on the specific configuration of the room.



MRPA3

PATIENT ROOM RECESSED LED LUMINAIRE



DOWNLOAD SPEC SHEET & IES FILES:

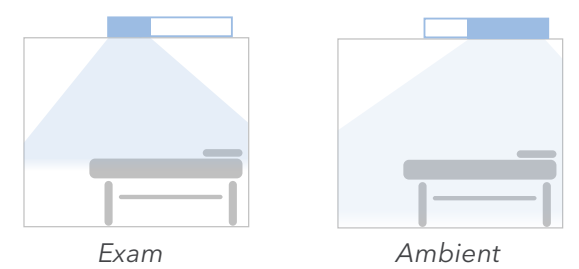
MRPA3

DIMENSIONS

2'x 4'

FUNCTIONS:

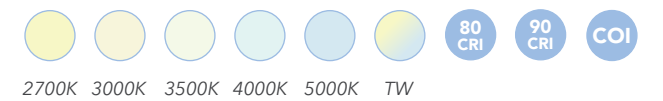
- Exam
- Ambient



STANDARDS



LED OPTIONS



MOUNTING

T-Bar / Plaster

LUMEN OUTPUT

Function	Lumens*	Avg. Illuminance**
Exam	8000	91 fc
	9000	103 fc
Ambient	3000	16 fc
	4000	21 fc

* Custom lumen package available

**For illustrative purposes only based on a 10' x 10' x 9' room and subject to a number of assumptions based on the specific configuration of the room.



MRPA4

RECESSED LUMINAIRE (EXAM & AMBIENT)



DOWNLOAD SPEC SHEET & IES FILES:

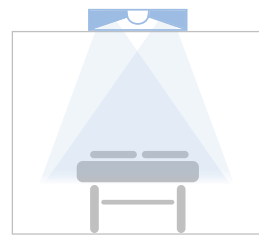
MRPA4

DIMENSIONS

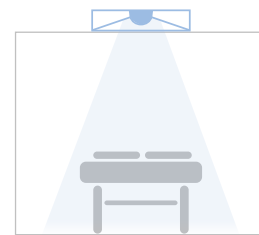


FUNCTIONS:

- Exam
- Ambient



Exam



Ambient

STANDARDS



LED OPTIONS



MOUNTING

T-Bar / Plaster

LUMEN OUTPUT

Function	Lumens*	Avg. Illuminance**
Exam	7000	89 fc
	10000	112 fc
Ambient	3000	16 fc
	4000	21 fc

* Custom lumen package available

**Avg. Illuminance; For illustrative purposes only based on a 10' x 10' x 9' room and subject to a number of assumptions based on the specific configuration of the room.

MRPA5

RECESSED PATIENT ROOM LINEAR LUMINAIRE



DOWNLOAD SPEC SHEET & IES FILES:

MRPA5

DIMENSIONS



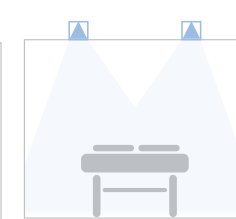
* Must be Specified in Pairs Left & Right

FUNCTIONS:

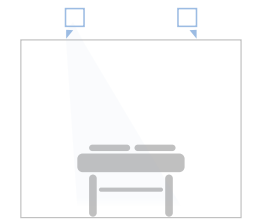
- Exam
- Ambient
- Night light



Exam



Ambient

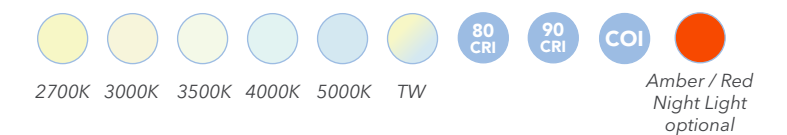


Night Light

STANDARDS



LED OPTIONS



MOUNTING

T-Bar / Plaster

LUMEN OUTPUT (L & R COMBINED)

Function	Lumens*	Wattage
Exam	(9,500 lm / pair)	78W
Ambient	(6,000 lm / pair)	60W
Exam + Ambient	(15,500 lm / pair)	112W

* Custom lumen package available

**For illustrative purposes only based on a 10' x 10' x 9' room and subject to a number of assumptions based on the specific configuration of the room.

Bedlight.

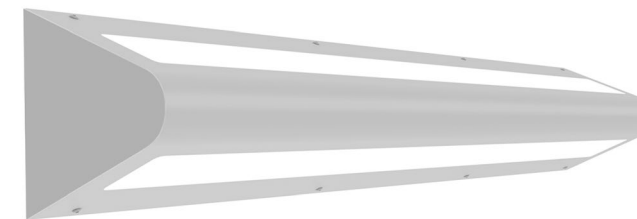
The **MURA Wall-Mounted** Luminaire, available in 2, 3, and 4-foot lengths, is engineered for high-security and anti-vandal applications.

This specification-grade fixture offers direct/indirect lighting through dual apertures and is designed to be ligature-resistant with continuous welded seams for added strength.

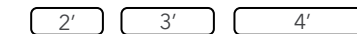


MURA

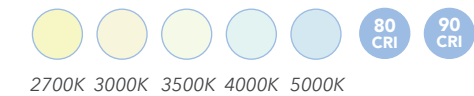
LUMINAIRE WITH BI-DIRECTIONAL DISTRIBUTION



DIMENSIONS



LED OPTIONS



2700K 3000K 3500K 4000K 5000K

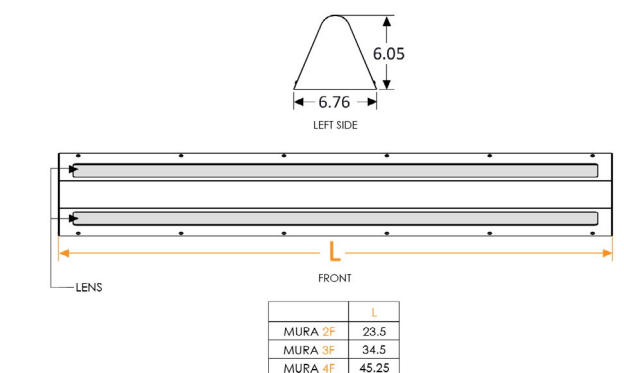
FINISHES



MOUNTING

Wall mount

FIXTURE DIMENSIONS



DOWNLOAD SPEC SHEET & IES FILES:

[MURA](#)

STANDARDS



LUMEN OUTPUT

Function	Lumens
Down Light	2000
	4000
	6000
Up Light	2000
	4000
	6000
Night Light	500



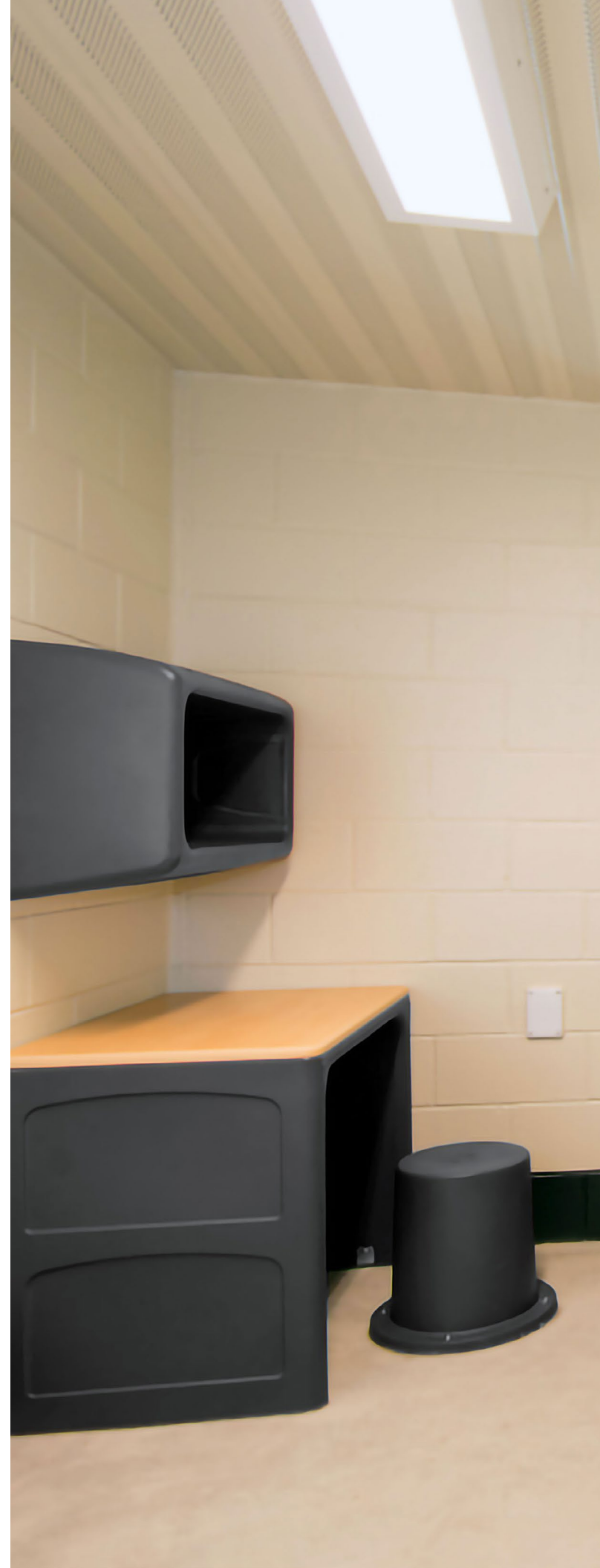
White Opal

* Custom lumen package available

**Night Light only available in 4'

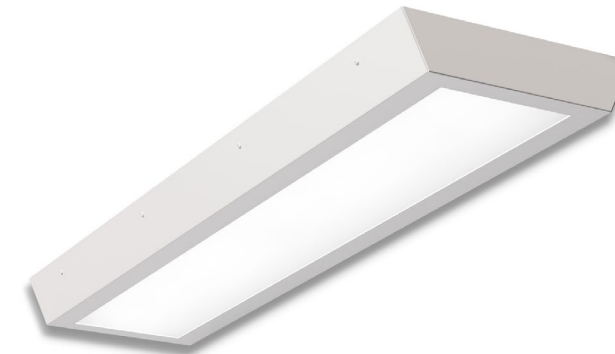
PUWA

The PUWA Tamper-Resistant Surface Mount Luminaire delivers top-notch security and durability, ideal for high-risk environments. With its robust construction and anti-ligature design, it stands up to vandalism and tampering. Perfect for correctional facilities, locker rooms, and public areas where safety and resilience are paramount.



PUWA

TAMPER PROOF SURFACE MOUNT LUMINAIRE



DIMENSIONS

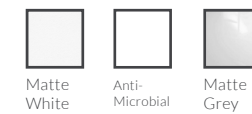


LED OPTIONS



2700K 3000K 3500K 4000K 5000K TW

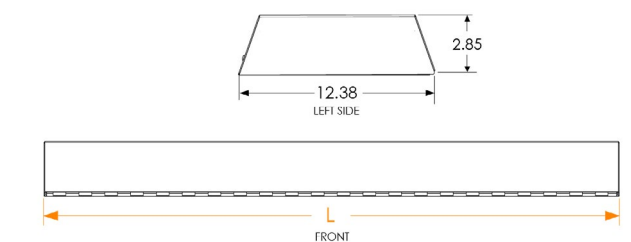
FINISHES



MOUNTING

Surface Mount

FIXTURE DIMENSIONS



PUWA	L
2F	23.35
3F	34.25
4F	45.25

DOWNLOAD SPEC SHEET & IES FILES:

[PUWA](#)

STANDARDS



LUMEN OUTPUT

Dimensions	Lumens
2F (23" long)	3,000
	4,000
4F (45" long)	4000
	6000
	8000



* Custom lumen package available

Key Considerations

When Choosing Fixtures for Behavioral Facilities:

Ligature Resistant

Ligature resistant, no cutting, tamper resistant, cannot be used as a weapon and no contraband storage.

Anti-vandal

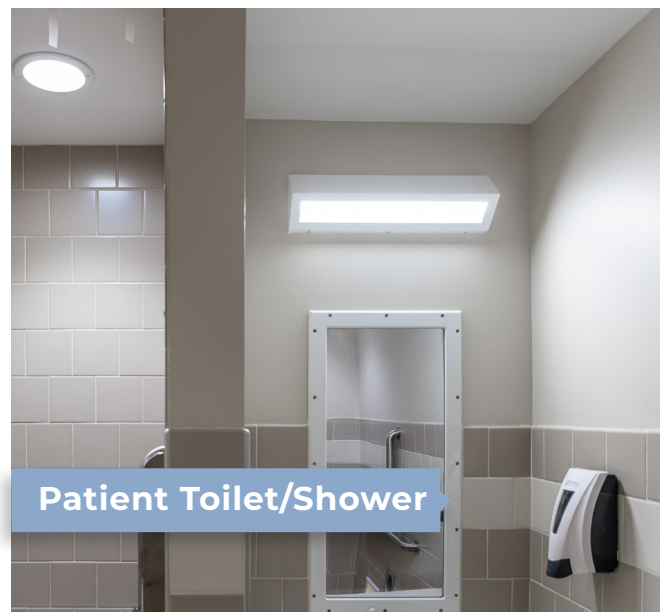
Heavy gauge steel, polycarbonate security lens, tamperproof fasteners. Built to resist heavy impacts.

Durable

Long lasting LED boards and drivers, heavy duty housings and lenses for low-maintenance peace of mind.

Sealed for Safety & Security

To ensure optimal safety and security, lighting should be IP-certified to prevent dust and water ingress, minimize the risk of self-injury, and resist the spread of bacteria.



Illuminating Wellness: The Role of Behavioral Health Lighting

At Pa-Co Lighting, we are dedicated to crafting luminaires that address the unique challenges of behavioral health spaces.

In behavioral health settings, where patients may experience heightened stress or anxiety, the impact of lighting is particularly critical.

Research consistently highlights the significant effect of lighting on patient outcomes in behavioral health environments. Well-designed lighting can:

Reduce Symptoms of Depression and Anxiety: Thoughtfully crafted lighting can create a calming atmosphere that alleviates feelings of distress.

Enhance Sleep Quality and Duration: Optimal lighting conditions support better sleep patterns, essential for recovery and mental clarity.

Boost Patient Satisfaction and Engagement in Therapy: A comfortable and inviting environment fosters a more positive therapeutic experience.

Accelerate Recovery Rates: Appropriate lighting can contribute to faster healing by promoting a sense of safety and well-being.

By addressing the unique sensory needs and challenges faced by individuals with mental health conditions, behavioral health lighting plays a vital role in a holistic care approach that encompasses both physical and psychological well-being.



SCAN ME



Visit Our Website!

Lighting Matters in Behavioral Health Spaces

Follow Us:



LinkedIn



Facebook



Instagram



info@pacolighting.com
www.pacolighting.com

