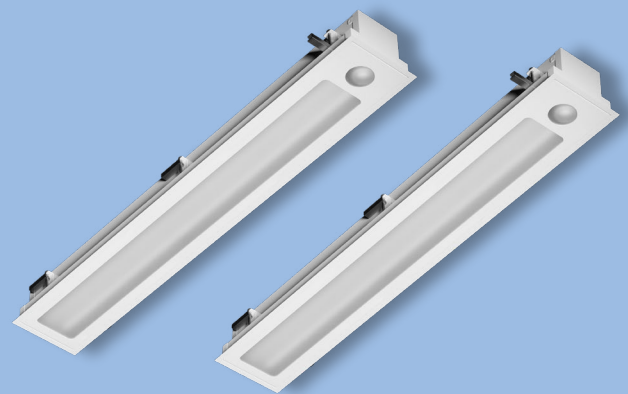




# MULTI-FUNCTION PATIENT ROOM LUMINAIRES

**PACO**  
a brand of **LMPG**

**MRP6**

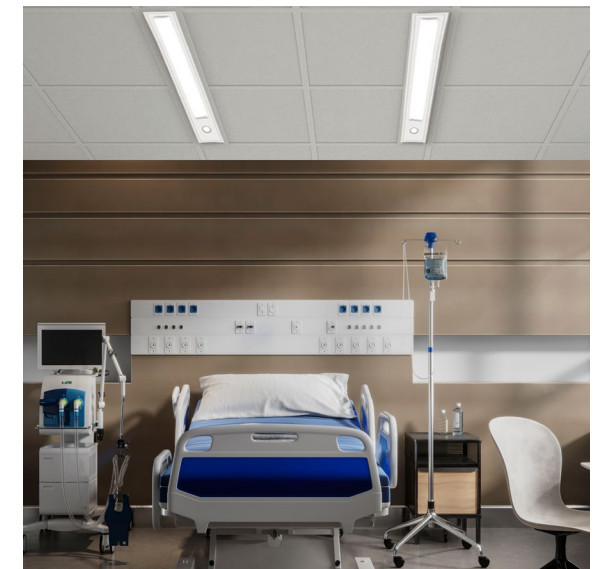
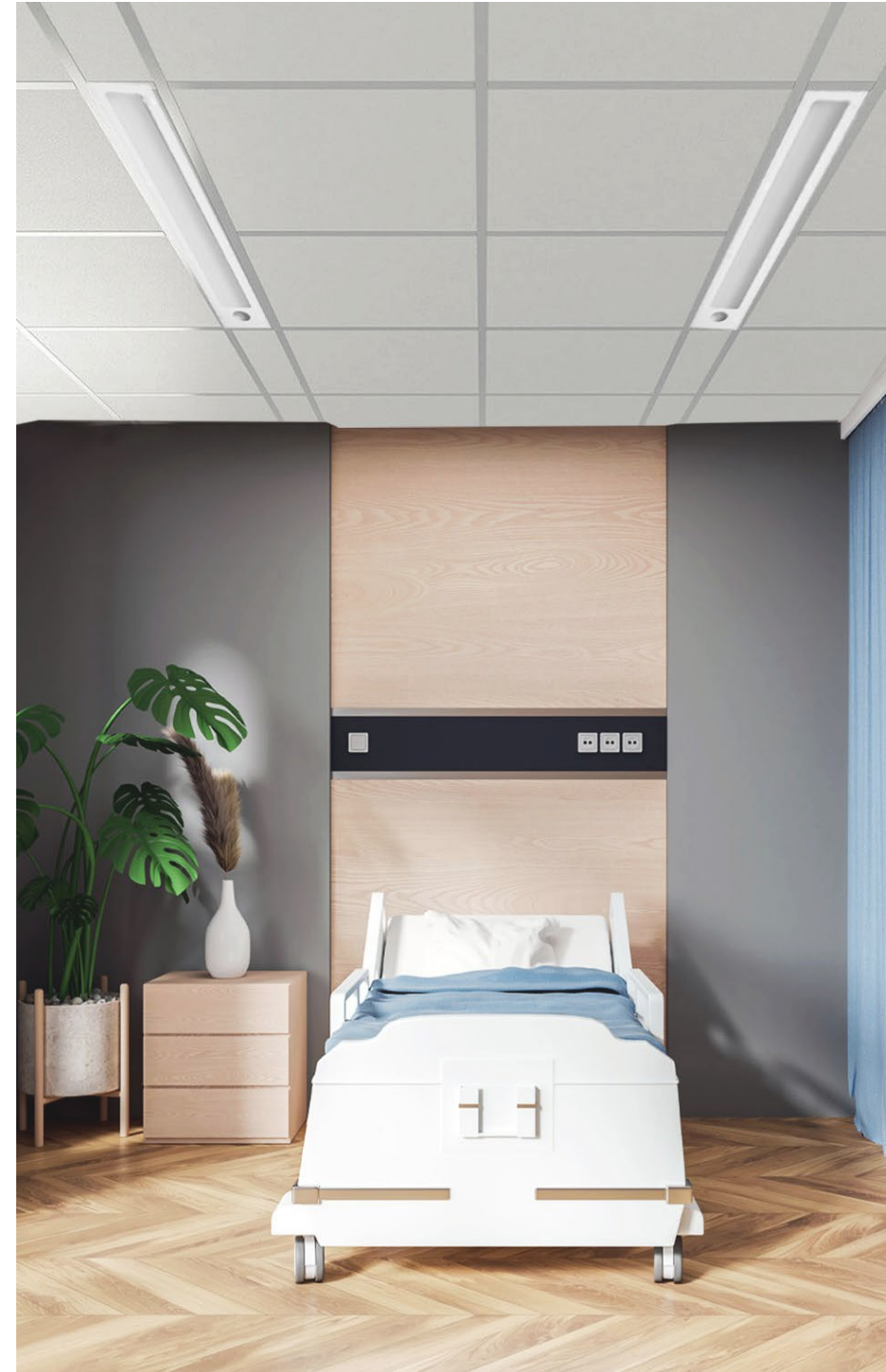


## Description

We designed the **MRP6** to conveniently integrate all the functions required in a patient room into this pair of luminaires. This modern, multifunction patient room fixtures include **Reading, Ambient, and Exam functions**, aiming to create an optimal healing environment for the patient. Additionally, it maximizes clinical efficiencies through appropriate lumen outputs and glare-free lighting.

## Features

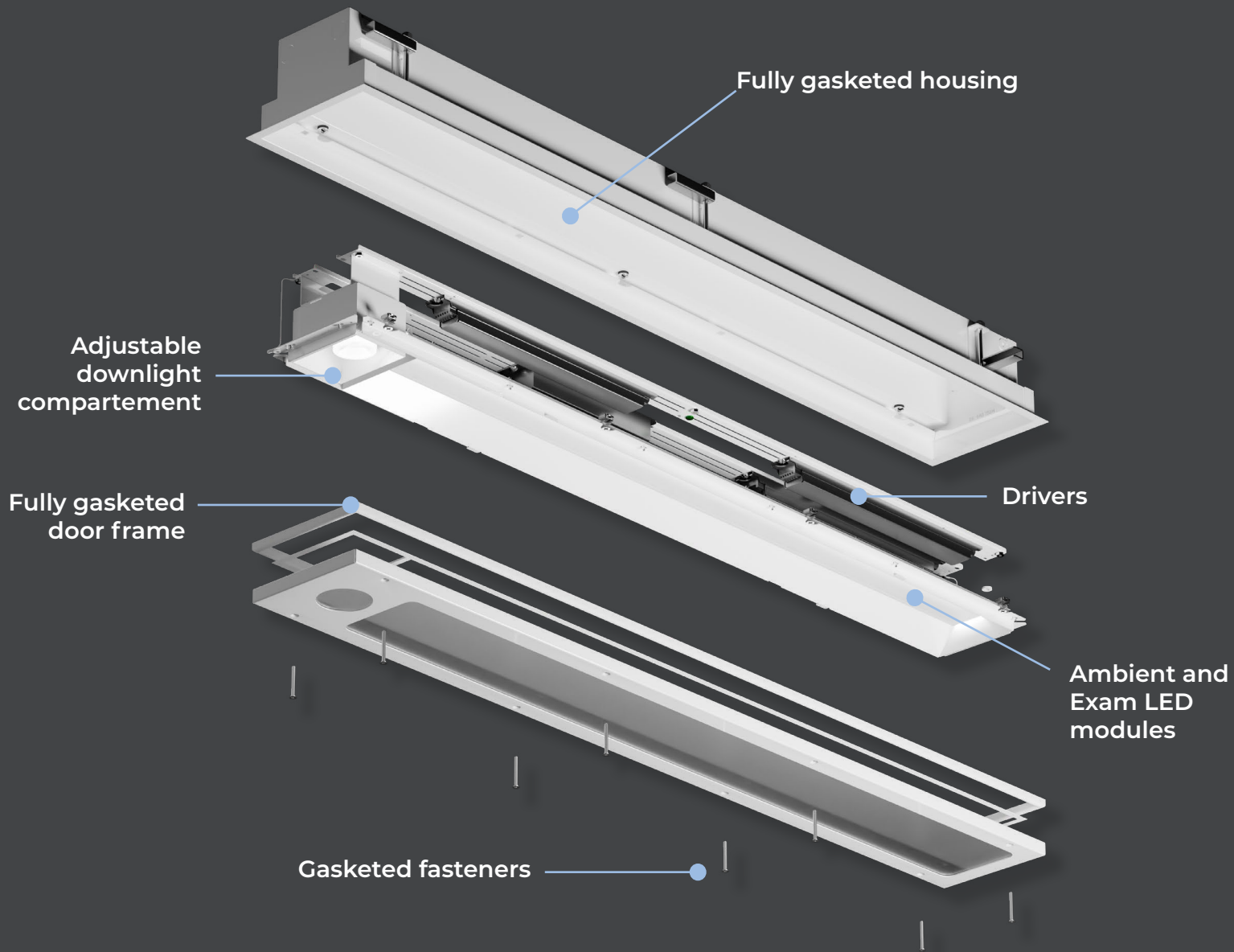
- Includes reading, ambient, and examination functions to support patients and their caregivers.
- Minimum 80 CRI, optional 90 and 95 CRI
- Standard IP65 for recessed applications and optional screwless IP54 doorframe.
- Multiple dimming protocols available and optional low voltage relay for nurse call system compatibility.
- Optional mounting options: T-Bar and Flange.
- Optional antimicrobial finish.
- Special LED modules and optics providing a clean, glare-free illumination for all patient room environments.



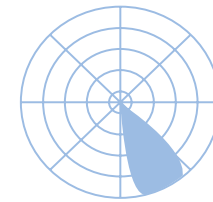
## LISTINGS



# Exploded View

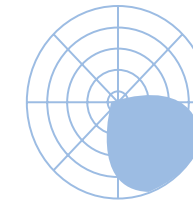


# Optical Flexibility



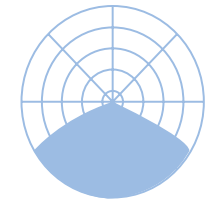
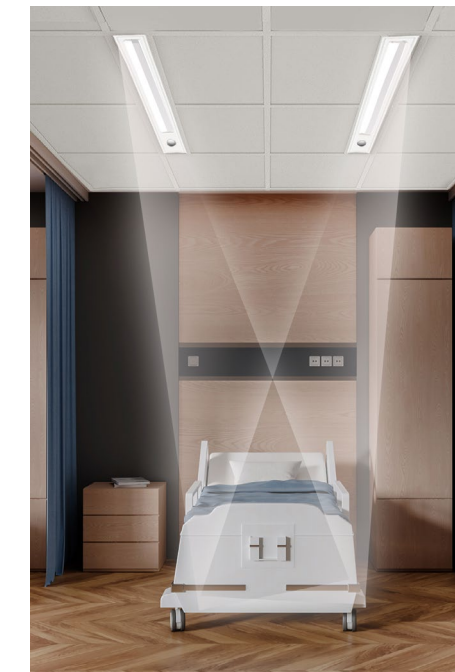
**Reading**

Reading option offers a directional 30° beam angle focused on the pillow section to obtain high enough foot candles for comfortable reading tasks without spreading unnecessary illumination in the patient room.



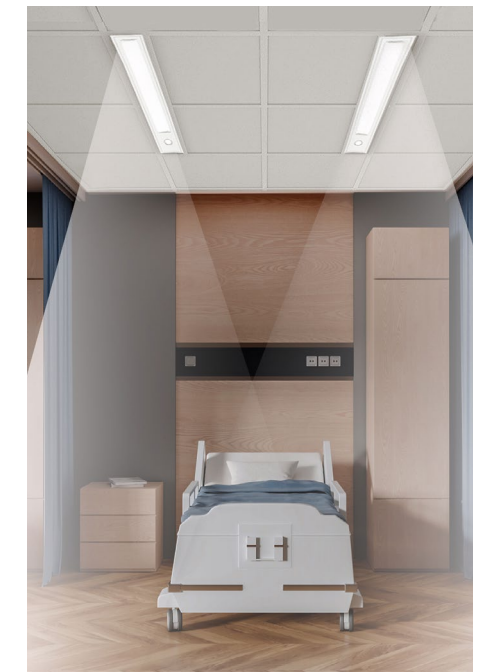
**Exam**

The Exam mode directs a large amount of high intensity illumination that facilitates the execution of precise tasks. Ideal for the medical staff to better evaluate and diagnose the patients.



**Ambient**

MRP6 delivers comfortable, widespread illumination for routine monitoring and daytime activities with an average illuminance of 10 to 20 fc.

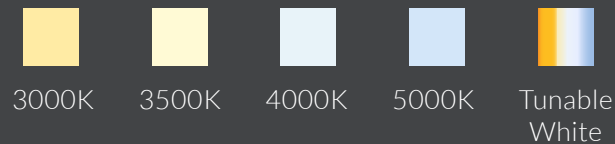


# Versatility

## Functions

- Exam
- Ambient
- Reading

## Color temperatures



## Size

L: 47.5"

W: 7.5"

H: 4.7"

## Color rendering options

- 80 +
- 90 +
- 95 +
- COI compliant

## Control Options

- **ND** | Non-dimming applications
- **D** | 0-10V dimming
- **DA** | DALI driver

## Finish option

Anti-Microbial Matte White

# Human Centric Lighting



Beyond being a mere light fixture, **MRP6** integrates well-established wellness principles to enhance the well-being of both patients and caregivers.

Its unobtrusive and discreet design effortlessly blends with room features, creating a warm and calming ambiance. With multiple lighting modes that align with circadian rhythms, it not only fosters a soothing environment but also aids in visual diagnoses for medical professionals.

## Tunable / Dynamic White

Ensure patients remain alert when necessary and feel calm when it's time, thanks to the versatile two-channel control (analog or digital) over color temperature and lumen output.

Adjust seamlessly from **2700K (warm)** to **6500K (cool)**.



LOCAL / GLOBAL  
**PACO LIGHTING**

**Follow Us:**



LinkedIn



Facebook



Instagram



info@pacolighting.com | www.pacolighting.com